



**Vermeire**  
belting

**SERAX**

**BRITISH STANDARD CHAINS,  
BS 4116 PART 4 (Z series)**



Vermeire Transmissions  
rue de la filature 41  
B-4800 ENSIVAL

Vermeire Aandrijvingen NV  
Gaston Crommenlaan 4 bus 0501  
B-9050 GENT

[www.vermeire.com](http://www.vermeire.com)  
[info@vermeire.com](mailto:info@vermeire.com)

# VERMEIRE-BELTING: LA TRANSMISSION DEPUIS TROIS GENERATIONS / DE AANDRIJVING SINDS 3 GENERATIES



En 70 ans et 3 générations, le groupe Vermeire est devenu le leader belge des produits de transmission pour l'industrie.

Le succès du groupe repose sur un programme très complet en produits de transmission, une logistique très performante grâce à un stock exceptionnel (40.000 références sur 15.000m<sup>2</sup>) et un support technique de qualité assuré par une équipe d'ingénieurs expérimentés.

La position centrale au sein de l'Europe garantit des livraisons économiques et très rapides à ses clients partout en Belgique, au Luxembourg, aux Pays-Bas, en France ou en Allemagne.

Le site web [vermeire.com](http://vermeire.com) propose aux partenaires et clients le téléchargement d'une multitude de catalogues techniques, les prix et disponibilités (login) jusqu'à la gestion des commandes online.

Na 70 jaar en 3 generaties is de groep Vermeire nu de leader geworden op de Belgische markt van aandrijfproducten.

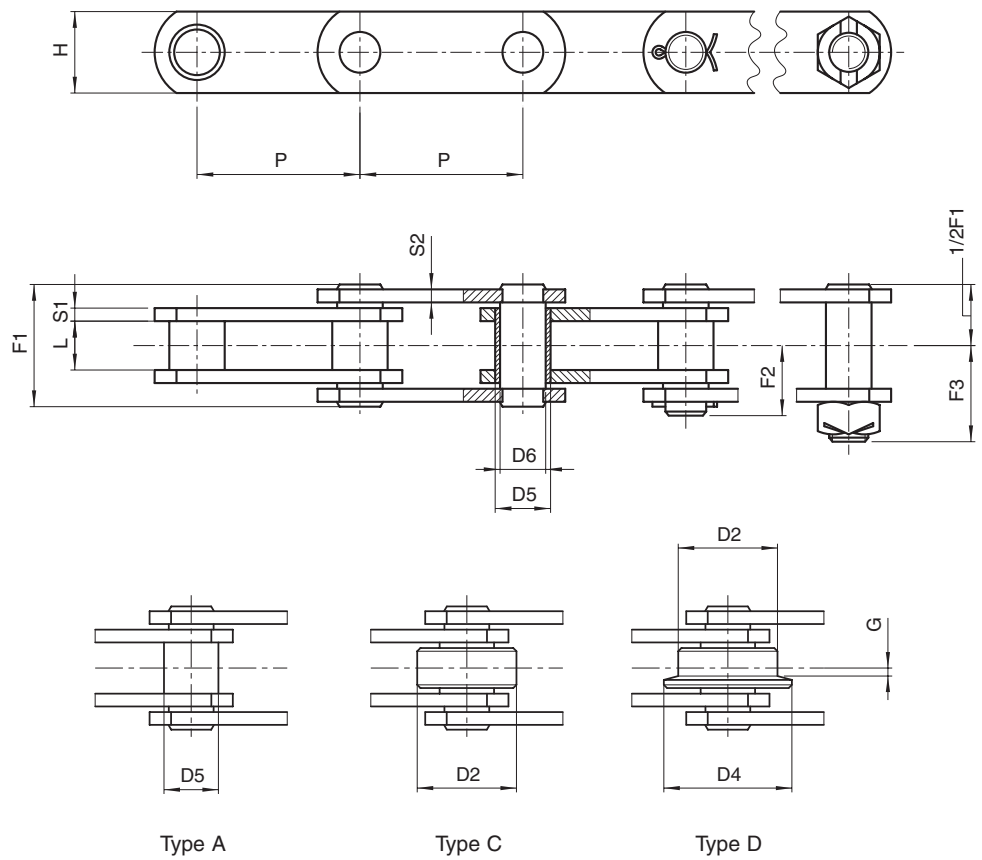
Onze troeven: een volledig programma voor aandrijf producten, een zeer efficiënte logistiek met een belangrijke voorraad (40.000 artikelen op 15.000 m<sup>2</sup>) en een kwaliteitsvolle technische ondersteuning door ervaren ingenieurs.

Dankzij onze centrale ligging in Europa kunnen we heel snel op een economisch verantwoorde wijze leveren in België, Luxemburg, Nederland, Frankrijk en Duitsland wat de continuïteit van uw productie verzekert.

Op onze website vindt u de catalogi van onze partners en met een login kunt u gemakkelijk naast de voorraad checken en uw prijzen consulteren, ook uw bestellingen plaatsen.



# BRITISH STANDARD CHAINS, BS 4116 PART 4



## SOLID PIN CHAINS

Chain N.	P inches	P mm	L mm	D2 mm	D4 mm	G mm	D5 mm	D6 mm	H mm	S1 mm	S2 mm	F1 mm	F2 mm	F3 mm	Breaking load	
															N	N*
7500 lbf Z40	2	50,8	15	31,75	40	2,5	17	14	25	4	4	37	22	28,5	40.000	50.000
"	2,5	63,5	"	"	"	"	"	"	"	"	"	"	"	"	"	"
"	3	76,2	"	"	"	"	"	"	"	"	"	"	"	"	"	"
"	3,5	88,9	"	"	"	"	"	"	"	"	"	"	"	"	"	"
"	4	101,6	"	"	"	"	"	"	"	"	"	"	"	"	"	"
"	5	127	"	"	"	"	"	"	"	"	"	"	"	"	"	"
"	6	152,4	"	"	"	"	"	"	"	"	"	"	"	"	"	"
15000 lbf Z100	3	76,2	19	47,5	60	3,5	23**	19	40	5	4	45	28	37	100.000	130.000
"	3,5	88,9	"	"	"	"	"	"	"	"	"	"	"	"	"	"
"	4	101,6	"	"	"	"	"	"	"	"	"	"	"	"	"	"
"	5	127	"	"	"	"	"	"	"	"	"	"	"	"	"	"
"	6	152,4	"	"	"	"	"	"	"	"	"	"	"	"	"	"
"	7	177,8	"	"	"	"	"	"	"	"	"	"	"	"	"	"
"	8	203,2	"	"	"	"	"	"	"	"	"	"	"	"	"	"

(\*) Breaking load with heat treated plates

(\*\*) Ø 24 mm. for chain type "A"

Additional features:

- metric pitch
- rollers of nylon, delrin, etc.
- with extended pins
- in STAINLESS steel
- surface treatments of zinc plating, nickel plating, etc.
- pre-tensioned and labelled

# BRITISH STANDARD CHAINS, BS 4116 PART 4

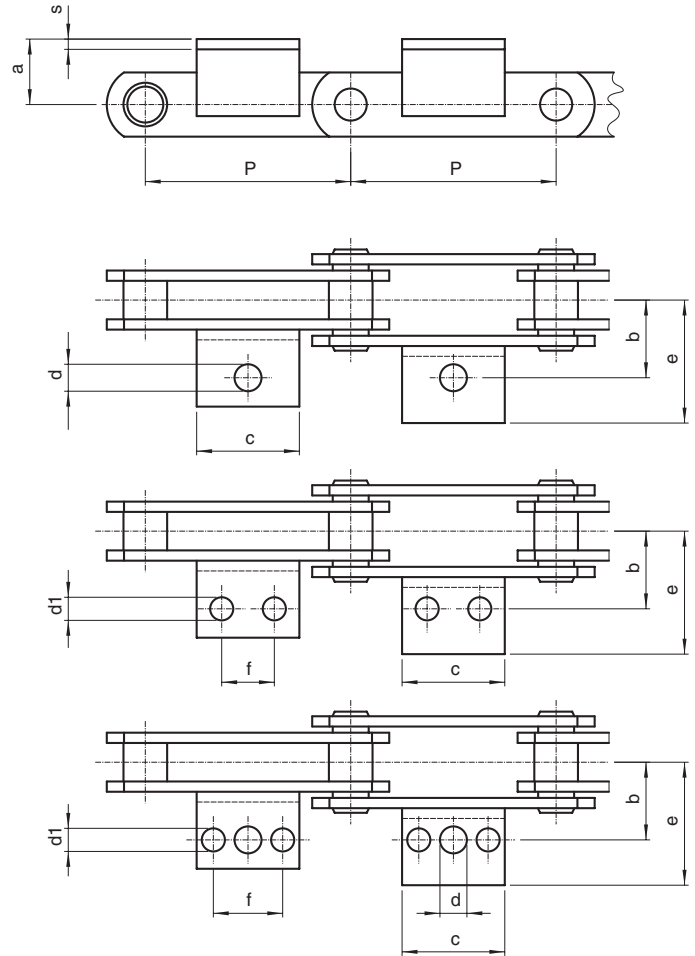
## ALTERNATIVE ATTACHMENTS

- "K" TYPE ATTACHMENTS AS SHOWN
- "L" TYPE - ONE SIDE OR BOTH SIDES WELDED OR INTEGRAL.
- "F" TYPE - WITH ONE OR TWO HOLES - WELDED.
- "S" TYPE - PUSHER - ONE SIDE OR BOTH.
- "M" TYPE - VERTICAL ON INNER OR OUTER LINKS.
- "G" TYPE - ON INNER OR OUTER LINKS.
- SPECIAL ATTACHMENTS TO SUIT INDIVIDUAL APPLICATIONS.

EXTENDED BEARING PINS  
 OUTBOARD ROLLERS ONE SIDE OR BOTH.  
 HOLES INSIDE PLATES AS REQUIRED.

Layout of attachments  
 on page 1.9/2

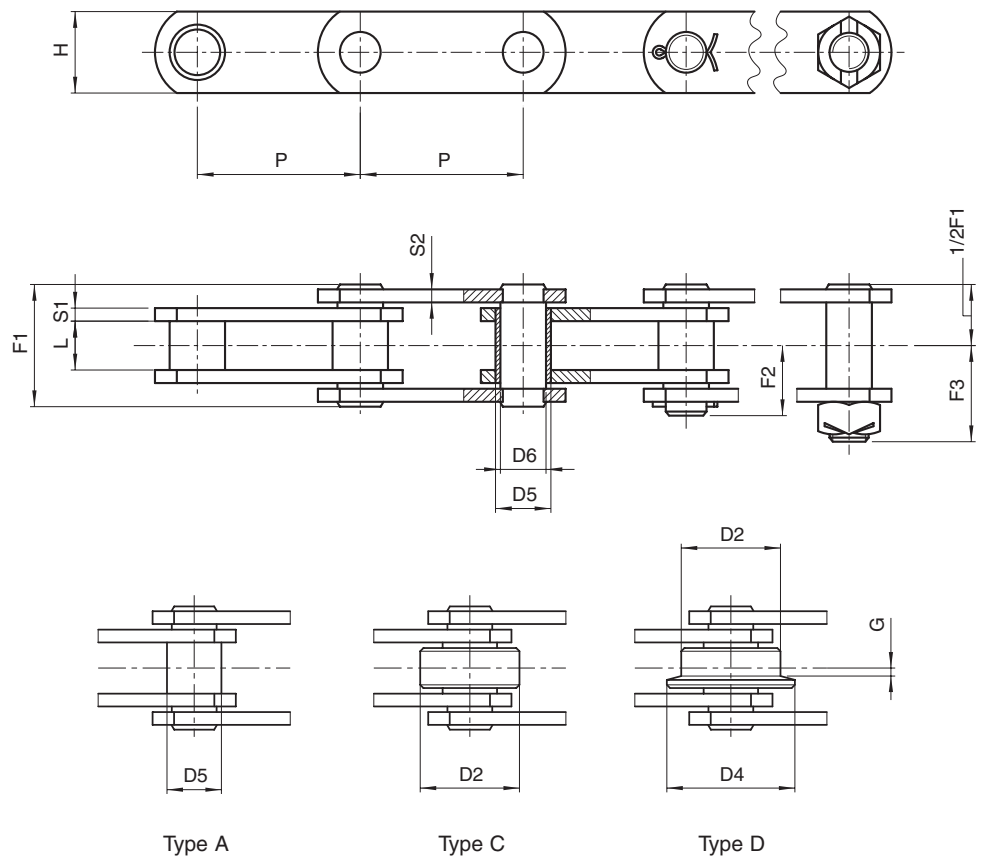
## ATTACHMENTS



Chain N.	Symbol	P mm	a mm	b mm	c mm	d mm	d1 mm	e mm	f mm	Angle mm	Chain weight			Weight per attach. kg
											type A	type C	type D	
Z40	● ⊗	50,8	19	38,1	45	10,7	/	64,5	/	/	3	4,2	4,4	0,100
"	● ♣	63,5	"	"	43	"	9,3	56	22,2	40x25x4	2,8	3,8	3,9	0,100
"	□ ⊗	76,2	"	"	"	"	"	68	"	/	2,5	3,3	3,4	0,100
"	□	88,9	"	"	50	"	"	56	31,8	40x25x4	2,4	3,1	3,2	0,100
"	□ ⊗	101,6	"	"	64	"	"	55	"	/	2,3	2,9	3	0,100
"	□	127	"	"	84	"	"	56	57,2	40x25x4	2,1	2,6	2,7	0,200
"	□	152,4	"	"	"	"	"	"	"	"	1,9	2,4	2,5	0,200
Z100	●	76,2	32	44,5	30	14	/	65	/	45x5	4,9	7,7	8,2	0,100
"	●	88,9	"	"	"	"	/	"	/	"	4,7	7,1	7,5	0,100
"	□ ⊗	101,6	"	"	64	"	10,5	"	31,8	/	4,6	6,5	7	0,100
"	● ♣	127	"	"	84	"	"	"	57,2	45x5	4,3	5,6	6,2	0,300
"	□ ⊗	152,4	"	"	114,5	"	"	"	"	/	4,1	5,2	5,7	0,300
"	● ♣	177,8	"	"	110	"	"	"	80	45x5	3,9	4,8	5,2	0,400
"	● ♣	203,2	"	"	"	"	"	"	"	"	3,8	4,6	5	0,400

- attachments with 1 hole
- ♣ attachments with 2 holes
- attachments with 3 holes
- ⊗ integral attachments

# BRITISH STANDARD CHAINS, BS 4116 PART 4



## SOLID PIN CHAINS

Chain N.	P inches	P mm	L mm	D2 mm	D4 mm	G mm	D5 mm	D6 mm	H mm	S1 mm	S2 mm	F1 mm	F2 mm	F3 mm	Breaking load	
															N	N*
30000 lbf																
Z160	4	101,6	26	66,7	82	3,5	33	26,9	50	7	5	58	34,5	51,0	156.000	200.000
"	5	127	"	"	"	"	"	"	"	"	"	"	"	"	"	"
"	6	152,4	"	"	"	"	"	"	"	"	"	"	"	"	"	"
"	7	177,8	"	"	"	"	"	"	"	"	"	"	"	"	"	"
"	8	203,2	"	"	"	"	"	"	"	"	"	"	"	"	"	"
"	9	228,6	"	"	"	"	"	"	"	"	"	"	"	"	"	"
"	10	254	"	"	"	"	"	"	"	"	"	"	"	"	"	"
60000 lbf																
Z300	6	152,4	38	88,9	114	8,5	38	32	60	10	8	84	52	71,0	300.000	380.000
"	7	177,8	"	"	"	"	"	"	"	"	"	"	"	"	"	"
"	8	203,2	"	"	"	"	"	"	"	"	"	"	"	"	"	"
"	10	254	"	"	"	"	"	"	"	"	"	"	"	"	"	"
"	12	304,8	"	"	"	"	"	"	"	"	"	"	"	"	"	"

(\*) Breaking load with heat treated plates

### Additional features:

- metric pitch
- rollers of nylon, delrin, etc.
- with extended pins
- in STAINLESS steel
- surface treatments of zinc plating, nickel plating, etc.
- pre-tensioned and labelled

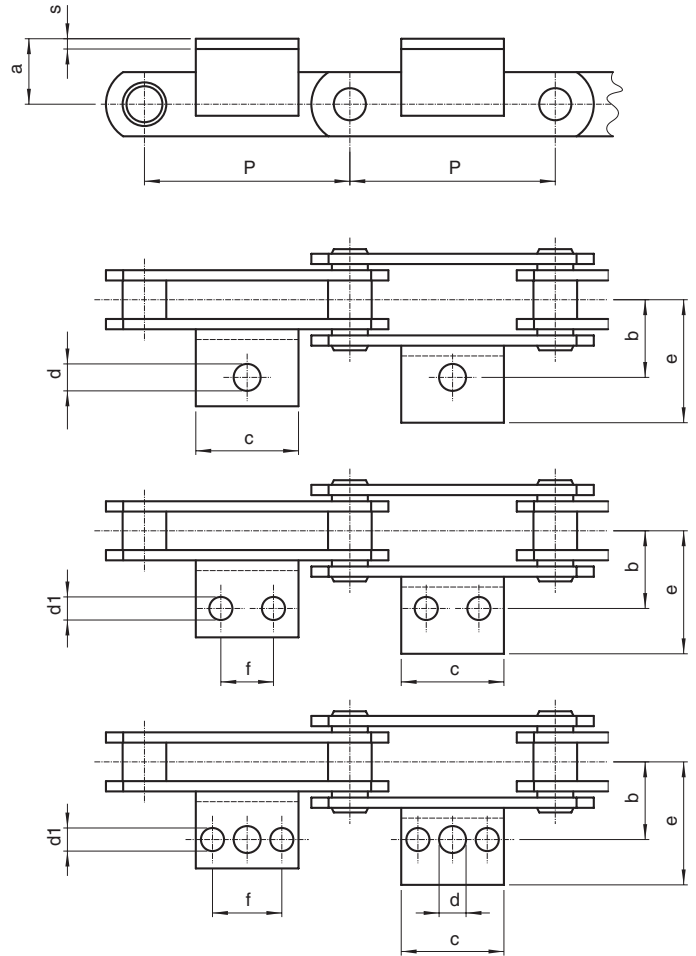
# BRITISH STANDARD CHAINS, BS 4116 PART 4

## ALTERNATIVE ATTACHMENTS

- “K” TYPE ATTACHMENTS AS SHOWN
- “L” TYPE - ONE SIDE OR BOTH SIDES WELDED OR INTEGRAL.
- “F” TYPE - WITH ONE OR TWO HOLES - WELDED.
- “S” TYPE - PUSHER - ONE SIDE OR BOTH.
- “M” TYPE - VERTICAL ON INNER OR OUTER LINKS.
- “G” TYPE - ON INNER OR OUTER LINKS.
- SPECIAL ATTACHMENTS TO SUIT INDIVIDUAL APPLICATIONS.

EXTENDED BEARING PINS  
 OUTBOARD ROLLERS ONE SIDE OR BOTH.  
 HOLES INSIDE PLATES AS REQUIRED.

Layout of attachments  
 on page 1.9/2

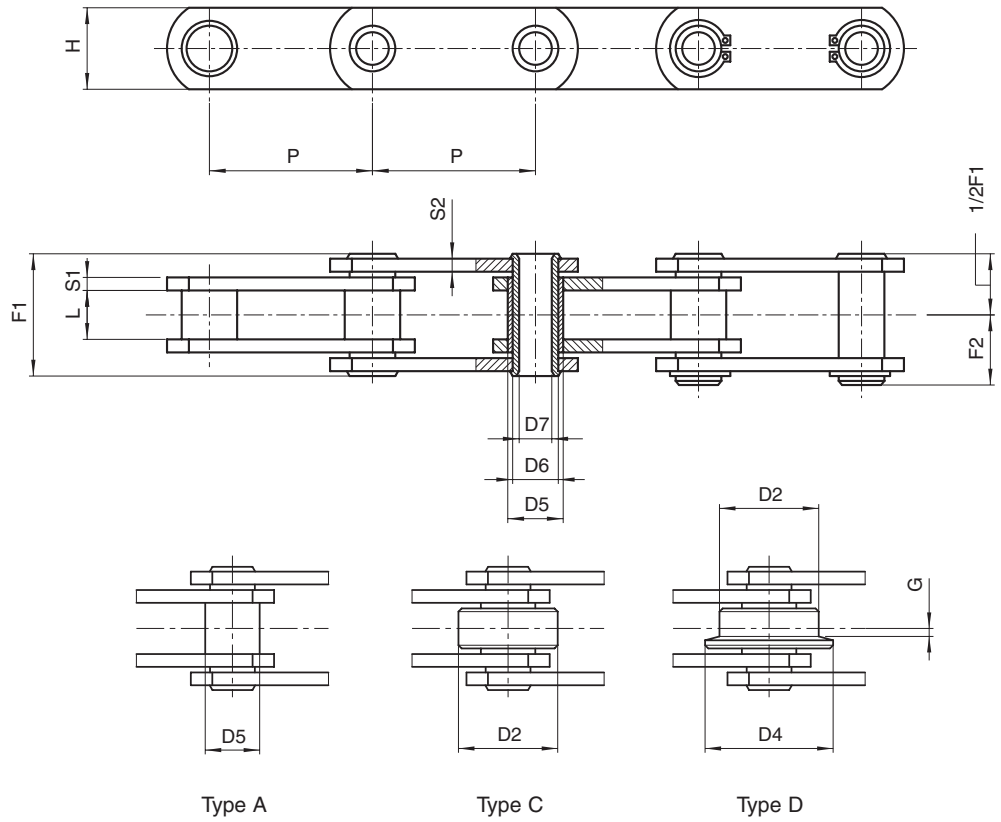


## ATTACHMENTS

Chain N.	Symbol	P mm	a mm	b mm	c mm	d mm	d1 mm	e mm	f mm	Angle mm	Chain weight			Weight per attach. kg
											type A	type C	type D	
Z160	●	101,6	38	54	35	15,5	/	77	/	/	8,8	13,7	14,9	0,200
“	●♣	127	“	“	56	“	12,3	“	31,7	50x6	8	11,8	12,8	0,300
“	●♣	152,4	“	“	84	“	“	“	57,2	“	7,5	10,8	11,5	0,400
“	●♣	177,8	“	“	“	“	“	“	“	“	7	9,8	10,5	0,400
“	●♣	203,2	“	“	130	“	“	“	100	“	6,7	9,2	9,7	0,600
“	●♣	228,6	“	“	150	“	“	“	“	“	6	8,9	9,1	0,700
“	●♣	254	“	“	170	“	“	“	135	“	5,6	7,6	8,0	0,700
Z300	●	152,4	51	73	70	17	14	100	38,1	60x8	14,7	24,3	26,0	0,500
“	●	177,8	“	“	“	“	“	“	“	“	13,7	22,0	23,5	0,500
“	●♣	203,2	“	“	100	“	“	“	76,2	“	13,1	20,5	21,6	0,700
“	●♣	254	“	“	152,4	“	“	“	90	“	12,2	18,0	19,0	0,900
“	●♣	304,8	“	“	225	“	“	“	190	“	11,6	16,5	17,5	1,600

- attachments with 1 hole
- ♣ attachments with 2 holes
- attachments with 3 holes

# BRITISH STANDARD CHAINS, BS 4116 PART 4



## HOLLOW PIN CHAINS

Chain N.	P inches	P mm	L mm	D2 mm	D4 mm	G mm	D5 mm	D6 mm	D7 mm	H mm	S1 mm	S2 mm	F1 mm	F2 mm	Breaking load		Chain weight kg/m**
															N	N*	
4500 lbf ZC21	1,5	38,1	12,7	25,4	/	/	11	9	6,5	18	2,5	2,5	26	14,5	21.000	/	2,1
"	2	50,8	"	"	"	"	"	"	"	"	"	"	"	"	"	"	1,7
"	2,5	63,5	"	"	"	"	"	"	"	"	"	"	"	"	"	"	1,6
"	3	76,2	"	"	"	"	"	"	"	"	"	"	"	"	"	"	1,4
6000 lbf ZC40	2	50,8	15	31,75	40	2,5	17	14	10,2	25	4	4	36,4	19,5	40.000	50.000	3,6
"	2,5	63,5	"	"	"	"	"	"	"	"	"	"	"	"	"	"	3,3
"	3	76,2	"	"	"	"	"	"	"	"	"	"	"	"	"	"	3
"	3,5	88,9	"	"	"	"	"	"	"	"	"	"	"	"	"	"	2,8
"	4	101,6	"	"	"	"	"	"	"	"	"	"	"	"	"	"	2,6
"	5	127	"	"	"	"	"	"	"	"	"	"	"	"	"	"	2,4
"	6	152,4	"	"	"	"	"	"	"	"	"	"	"	"	"	"	2,3
12000 lbf ZC60	3	76,2	19	47,5	60	3,5	23☆	19	13,2	40	5	4	45	23,5	60.000	120.000	6,9
"	3,5	88,9	"	"	"	"	"	"	"	"	"	"	"	"	"	"	6,4
"	4	101,6	"	"	"	"	"	"	"	"	"	"	"	"	"	"	5,9
"	5	127	"	"	"	"	"	"	"	"	"	"	"	"	"	"	5,3
"	6	152,4	"	"	"	"	"	"	"	"	"	"	"	"	"	"	4,9
"	7	177,8	"	"	"	"	"	"	"	"	"	"	"	"	"	"	4,6
"	8	203,2	"	"	"	"	"	"	"	"	"	"	"	"	"	"	4,4

(\*) Breaking load with heat treated plates

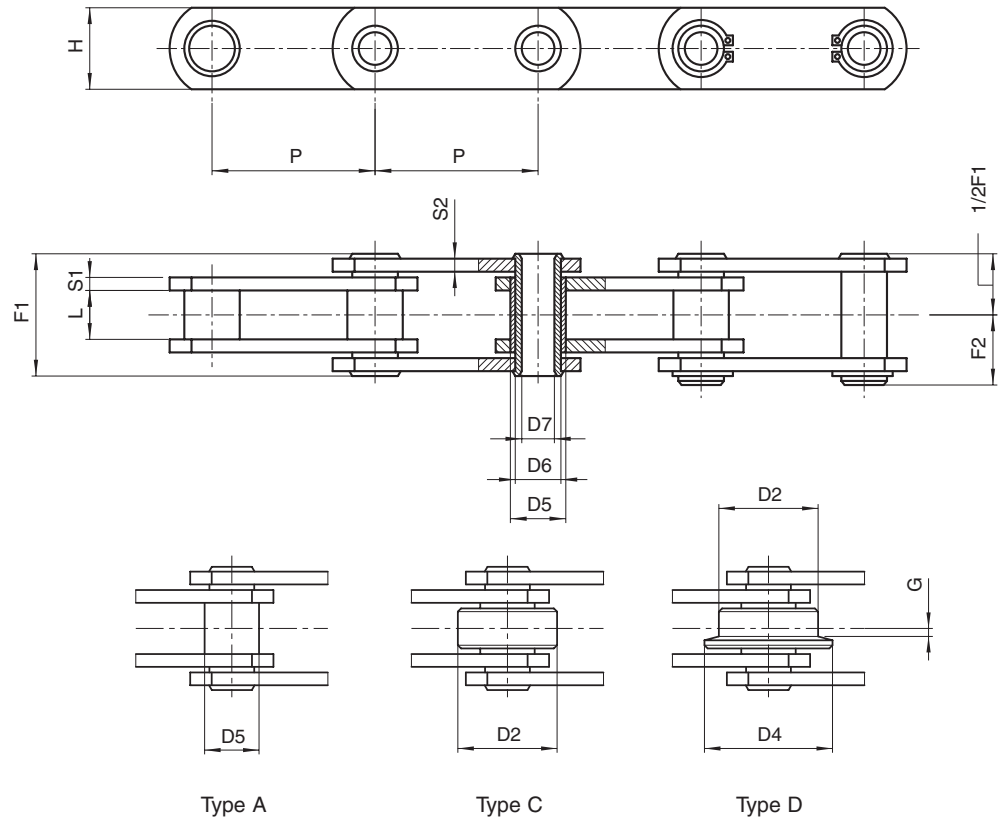
(\*\*) Weight for chain with roller "Type C"

(☆) Diameter 24mm for chain "Type A"

- Additional features:
- metric pitch
  - rollers of nylon, delrin, etc.
  - in STAINLESS steel
  - surface treatments of zinc plating, nickel plating, etc.
  - pre-tensioned and labelled

- ZC21 stainless steel.  
Sizes may differ from catalogue

# BRITISH STANDARD CHAINS, BS 4116 PART 4



## HOLLOW PIN CHAINS

Chain N.	P inches	P mm	L mm	D2 mm	D4 mm	G mm	D5 mm	D6 mm	D7 mm	H mm	S1 mm	S2 mm	F1 mm	F2 mm	Breaking load N	Breaking load N*	Chain weight kg/m**
24000 lbf																	
ZC150	4	101,6	26	66,7	82	4	33	26,9	20,2	50	7	5	58	31,5	150.000	190.000	12
"	5	127	"	"	"	"	"	"	"	"	"	"	"	"	"	"	10,8
"	6	152,4	"	"	"	"	"	"	"	"	"	"	"	"	"	"	9,8
"	7	177,8	"	"	"	"	"	"	"	"	"	"	"	"	"	"	9
"	8	203,2	"	"	"	"	"	"	"	"	"	"	"	"	"	"	8,5
"	9	228,6	"	"	"	"	"	"	"	"	"	"	"	"	"	"	8,2
"	10	254	"	"	"	"	"	"	"	"	"	"	"	"	"	"	7,7
36000 lbf																	
ZC300	6	152,4	38	88,9	114	8,5	38	32	23,1	60	10	8	83	43,5	300.000	380.000	22,1
"	7	177,8	"	"	"	"	"	"	"	"	"	"	"	"	"	"	20
"	8	203,2	"	"	"	"	"	"	"	"	"	"	"	"	"	"	18,6
"	10	254	"	"	"	"	"	"	"	"	"	"	"	"	"	"	16,4
"	12	304,8	"	"	"	"	"	"	"	"	"	"	"	"	"	"	15,3

(\*) Breaking load with heat treated plates

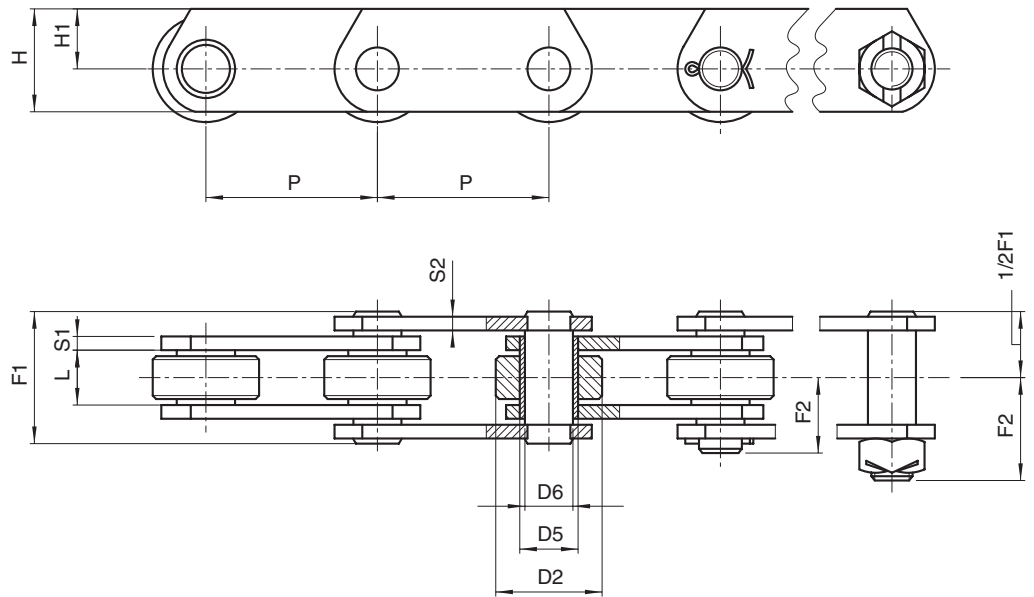
(\*\*) Weight for chain with roller "Type C"

Additional features:

- metric pitch
- rollers of nylon, delrin, etc.
- in STAINLESS steel
- surface treatments of zinc plating, nickel plating, etc.
- pre-tensioned and labelled



# BRITISH STANDARD CHAINS, BS 4116 PART 4



## DEEP LINK CHAINS

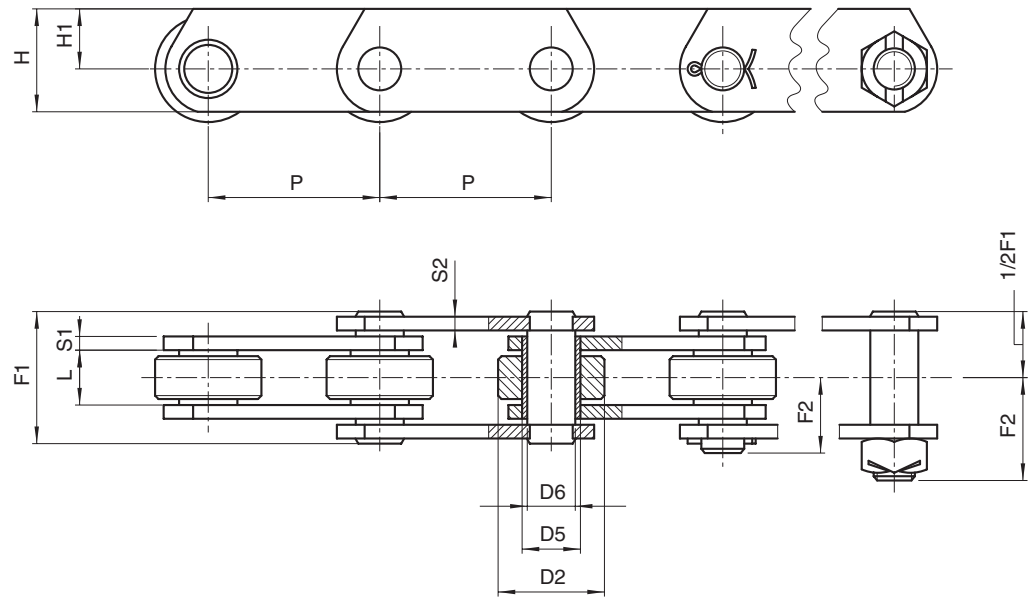
Chain N.	P inches	P mm	L mm	D2 mm	D5 mm	D6 mm	H mm	H1 mm	S1 mm	S2 mm	F1 mm	F2 mm	F3 mm	Breaking load N	Breaking load N*	Chain weight kg/m
7500 lbf ZE40	2	50,8	15	31,75	17	14	40	27	4	4	37	22	28,5	40.000	60.000	5,6
"	2,5	63,5	"	"	"	"	"	"	"	"	"	"	"	"	"	5,1
"	3	76,2	"	"	"	"	"	"	"	"	"	"	"	"	"	4,4
"	3,5	88,9	"	"	"	"	"	"	"	"	"	"	"	"	"	4,1
"	4	101,6	"	"	"	"	"	"	"	"	"	"	"	"	"	3,9
"	5	127	"	"	"	"	"	"	"	"	"	"	"	"	"	3,6
"	6	152,4	"	"	"	"	"	"	"	"	"	"	"	"	"	3,3
15000 lbf ZE100	3	76,2	19	47,5	23	19	50	30	5	4	45	28	37	100.000	160.000	9,2
"	3,5	88,9	"	"	"	"	"	"	"	"	"	"	"	"	"	8,5
"	4	101,6	"	"	"	"	"	"	"	"	"	"	"	"	"	7,8
"	5	127	"	"	"	"	"	"	"	"	"	"	"	"	"	6,9
"	6	152,4	"	"	"	"	"	"	"	"	"	"	"	"	"	6,4
"	7	177,8	"	"	"	"	"	"	"	"	"	"	"	"	"	6
"	8	203,2	"	"	"	"	"	"	"	"	"	"	"	"	"	5,7

(\*) Breaking load with heat treated plates

Additional features:

- metric pitch
- rollers of nylon, delrin, etc.
- in STAINLESS steel
- surface treatments of zinc plating, nickel plating, etc.
- pre-tensioned and labelled

# BRITISH STANDARD CHAINS, BS 4116 PART 4



## DEEP LINK CHAINS

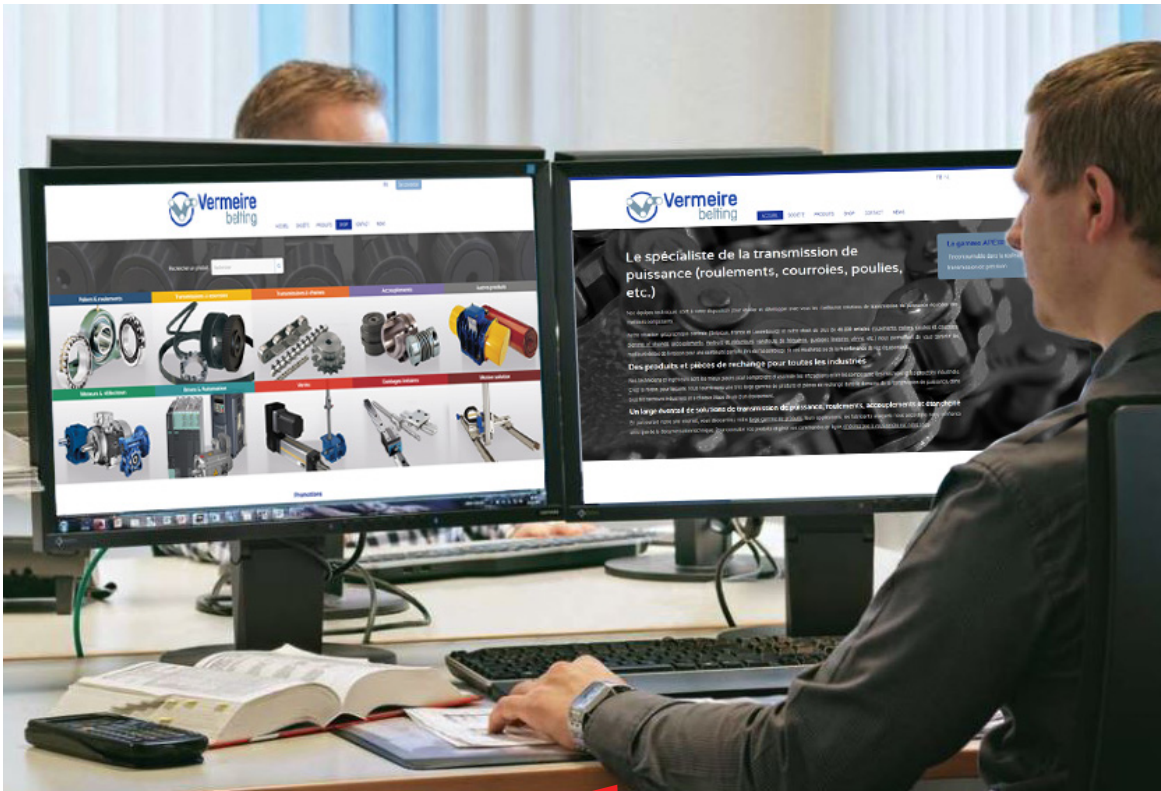
Chain N.	P inches	P mm	L mm	D2 mm	D5 mm	D6 mm	H mm	H1 mm	S1 mm	S2 mm	F1 mm	F2 mm	F3 mm	Breaking load		Chain weight kg/m
														N	N*	
30000 lbf ZE160	4	101,6	26	66,7	33	26,9	70	45	7	5	58	34,5	51	160.000	200.000	17,6
"	5	127	"	"	"	"	"	"	"	"	"	"	"	"	"	15,4
"	6	152,4	"	"	"	"	"	"	"	"	"	"	"	"	"	13,9
"	7	177,8	"	"	"	"	"	"	"	"	"	"	"	"	"	12,9
"	8	203,2	"	"	"	"	"	"	"	"	"	"	"	"	"	12,1
"	9	228,6	"	"	"	"	"	"	"	"	"	"	"	"	"	11,5
"	10	254	"	"	"	"	"	"	"	"	"	"	"	"	"	11
60000 lbf ZE300	6	152,4	38	88,9	38	32	90	60	10	8	84	52	71	300.000	380.000	32,2
"	7	177,8	"	"	"	"	"	"	"	"	"	"	"	"	"	29,4
"	8	203,2	"	"	"	"	"	"	"	"	"	"	"	"	"	27,3
"	10	254	"	"	"	"	"	"	"	"	"	"	"	"	"	24,4
"	12	304,8	"	"	"	"	"	"	"	"	"	"	"	"	"	22,5

(\*) Breaking load with heat treated plates

Additional features:

- metric pitch
- rollers of nylon, delrin, etc.
- in STAINLESS steel
- surface treatments of zinc plating, nickel plating, etc.
- pre-tensioned and labelled

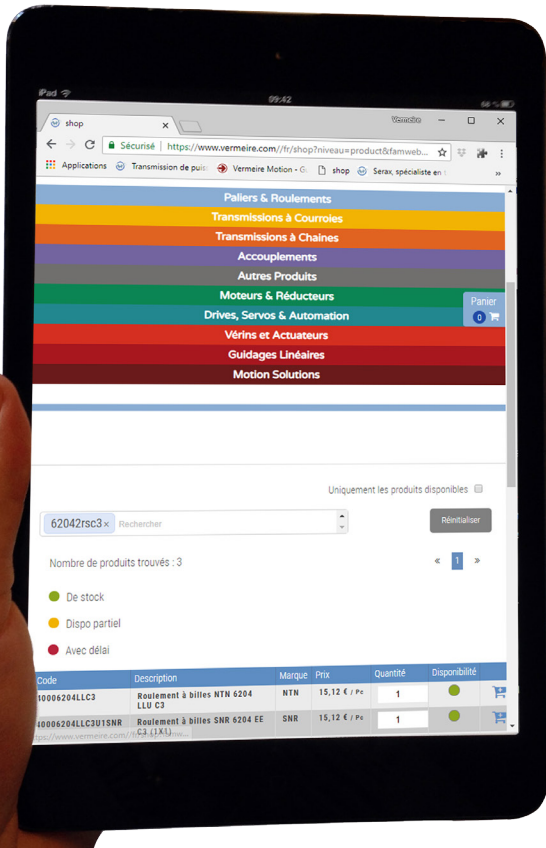
# Vermeire on line



**NEW WEB SITE**

**NEW WEBSHOP**

**STOCK ON LINE**



#### 1) VERMEIRE TRANSMISSIONS

Rue de la Filature, 41  
B-4800 ENSIVAL (VERVIERS)  
T. 32 (0)87 32 23 60  
F. 32 (0)87 31 50 71  
e info@vermeire.com  
www.vermeire.com

#### 2) VERMEIRE AANDRIJVINGEN

Gaston Crommenlaan 4  
bus 0501  
B-9050 GENT  
T. 32 (0)9 222 57 61  
F. 32 (0)9 221 72 41  
e gent@vermeire.com  
www.vermeire.com

#### 3) SERAX TRANSMISSIONS

Rue Gambetta, 147 BP 115  
F-59559 COMINES CEDEX  
T. 0 825 827 124  
F. 0 825 827 125  
e serax@vermeire.com  
www.serax.fr

#### 4) SERAX ANTRIEBSTECHNIK

T. 32 (0)87 32 29 99  
F. 32 (0)87 33 03 34  
e serax@vermeire.com  
www.serax.fr

#### 5) ACIERS CRUSTIN

RUE SIMON LOBET, 56  
B-4800 VERVIERS  
T. 32 (0)87 29 23 20  
F. 32 (0)87 29 23 29  
e info@crustin.be  
www.crustin.be

