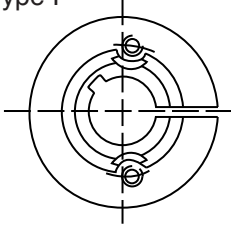
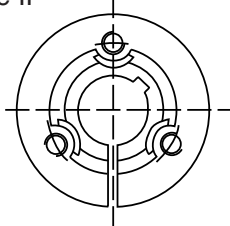


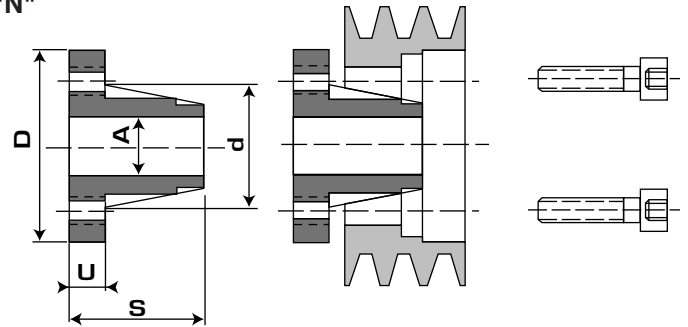
Type I



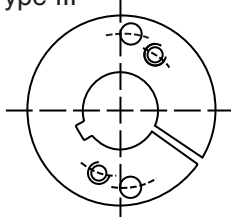
Type II



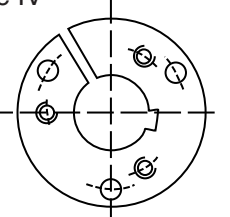
Montage "N"



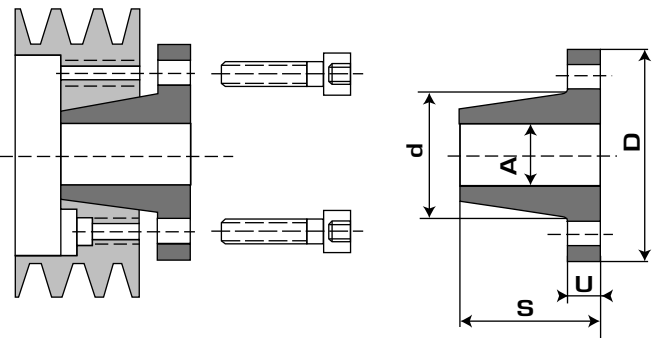
Type III



Type IV



Montage "R"



Référence	d	D	S	U	Type	Montage		A mm
2016	27	46	27	7	III	N + R	5 x 22	11 - 12 - 14 - 15 - 16 - 18 - 19 - 20 - (22) - (24) - (25)
2825	39	58	37	8	III	N + R	6 x 30	11 - 12 - 14 - 15 - 16 - 18 - 19 - 20 - 22 - 24 - 25 - 26 - 28 - 30*
3030	45	65	45	11	I	N	8 x 35	11 - 12 - 14 - 15 - 16 - 18 - 19 - 20 - 22 - 24 - 25 - 26 - 28 - 30 - 32 - 35*
3825	51	70	37	8	III	N + R	6 x 30	12 - 14 - 15 - 16 - 18 - 19 - 20 - 22 - 24 - 25 - 26 - 28 - 30 - 32 - 35 - 36 - 38 - 40*
4035	56	85	50	11	I	N	10 x 40	12 - 14 - 15 - 16 - 18 - 19 - 20 - 22 - 24 - 25 - 26 - 28 - 30 - 32 - 35 - 36 - 38 - 40 - 42 - 45*
4830	64	88	45	11	III	N + R	8 x 35	14 - 15 - 16 - 18 - 19 - 20 - 22 - 24 - 25 - 26 - 28 - 30 - 32 - 35 - 36 - 38 - 40 - 42 - 45 - 48 - 50*
5040	68	100	58	13	I	N	12 x 45	18 - 19 - 20 - 22 - 24 - 25 - 26 - 28 - 30 - 32 - 35 - 36 - 38 - 40 - 42 - 45 - 48 - 50 - 55*
6035	79	110	53	13	III	N + R	12 x 40	18 - 19 - 20 - 22 - 24 - 25 - 26 - 28 - 30 - 32 - 35 - 38 - 40 - 42 - 45 - 48 - 50 - 55 - 60 - 65*
6045	80	110	63	13	I	N	12 x 50	18 - 19 - 20 - 22 - 24 - 25 - 26 - 28 - 30 - 32 - 35 - 38 - 40 - 42 - 45 - 48 - 50 - 55 - 60 - 65*
6543	80	110	58	13	I	N	12 x 50	25 - 28 - 30 - 32 - 35 - 38 - 40 - 42 - 45 - 48 - 50 - 55 - 60 - 65
7540	96	137	59	14	III	N + R	14 x 45	30 - 32 - 35 - 38 - 40 - 42 - 45 - 48 - 50 - 55 - 60 - 60 - 65 - 70 - 75 - (80)
7060	98	140	79	14	I	N	14 x 65	30 - 32 - 35 - 38 - 40 - 42 - 45 - 48 - 50 - 55 - 60 - 65 - 70 - 75
8070	113	150	88	13	II	N	12 x 75	40 - 42 - 45 - 48 - 50 - 55 - 60 - 65 - 70 - 75 - 80 - 85
9560	123	165	80	15	IV	N	14 x 65	50 - 55 - 60 - 65 - 70 - 75 - 80 - 85 - 90 - 95 - (100)
9560	123	165	80	15	IV	R	14 x 45	50 - 55 - 60 - 65 - 70 - 75 - 80 - 85 - 90 - 95 - (100)
9085	126	165	105	15	II	N	14 x 90	50 - 55 - 60 - 65 - 70 - 75 - 80 - 85 - 90 - 95 - (100)
10095	143	190	119	18	II	N	16 x 100	50 - 55 - 60 - 65 - 70 - 75 - 80 - 85 - 90 - 95 - 100
115105	161	210	130	18	II	N	18 x 110	55 - 60 - 65 - 70 - 75 - 80 - 85 - 90 - 95 - 100 - 105 - 110 - 115 - 120
130120	177	230	145	18	II	N	20 x 120	60 - 65 - 70 - 75 - 80 - 85 - 90 - 95 - 100 - 105 - 110 - 115 - 120 - 125 - 130
160140	220	300	180	34	II	N	22 x 160	80 - 85 - 90 - 95 - 100 - 105 - 110 - 115 - 120 - 125 - 130 - 140 - 150 - 160
200170	270	360	220	40	II	N	22 x 200	120 - 125 - 130 - 140 - 150 - 160 - 170 - 180 - 190 - 200

() Sans rainure
- En acier
* Rainure basse

Without keyway
Steel
Shallower keyway

Ohne Nut
Aus Stahl
Flachnut

Zonder spiebaan
Klembus in staal
Verlaagde spiebaan

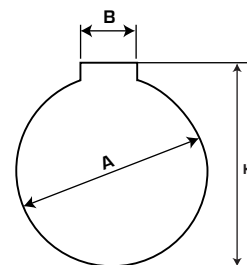
Senza cava
In acciaio
cava minorata

Rainures de clavettes DIN 6885 - ISO R773

(*) Rainures de clavettes basses

A mm	B mm	T mm
11 - 12	4	A + 1,8
14 - 15 - 16	5	A + 2,3
18 - 19 - 20 - 22	6	A + 2,8
24 - 25 - 26 - 28 - 30	8	A + 3,3
32 - 35 - 36 - 38	10	A + 3,3
40 - 42	12	A + 3,3
45 - 48 - 50	14	A + 3,8
55	16	A + 4,3

A mm	B mm	T mm
60 - 65	18	A + 4,4
70 - 75	20	A + 4,9
80 - 85	22	A + 5,4
90 - 95	25	A + 5,4
100 - 105 - 110	28	A + 6,4
115 - 120 - 125 - 130	32	A + 7,4
140 - 150	36	A + 8,4
160 - 170	40	A + 9,4
180 - 190 - 200	45	A + 10,4



A mm	B mm	T mm
30*	8	32,3
35*	10	37,2
40*	12	42,3
45*	14	46,8
50*	14	52,8
55*	16	56,8
65*	18	66,9